

## CD42c Polyclonal Antibody

### Description

<b>Product type</b>	Primary Antibody
<b>Code</b>	BT-AP14827
<b>Host</b>	Rabbit
<b>Isotype</b>	IgG
<b>Size</b>	20ul, 50ul, 100ul
<b>Immunogen</b>	Synthetic peptide from human protein at AA range: 90-150
<b>Mol wt</b>	N/A
<b>Species reactivity</b>	Human, Mouse, Rat
<b>Clonality</b>	Polyclonal
<b>Recommended application</b>	IHC-p, IF, ELISA
<b>Concentration</b>	1 mg/ml
<b>Full name</b>	Platelet glycoprotein Ib beta chain
<b>Synonyms</b>	Platelet glycoprotein Ib beta chain ;GP-Ib beta;GPIb-beta;GPIbB;Antigen CD42b-beta;CD antigen CD42c; Platelet glycoprotein Ib beta chain; GP-Ib beta; GPIb-beta; GPIbB; Antigen CD42b-beta; CD antigen CD42c

**This product is for research use only, not for use in human, therapeutic or diagnostic procedure.**

### Background

Platelet glycoprotein Ib (GPIb) is a heterodimeric transmembrane protein consisting of a disulfide-linked 140 kD alpha chain and 22 kD beta chain. It is part of the GPIb-V-IX system that constitutes the receptor for von Willebrand factor (VWF), and mediates platelet adhesion in the arterial circulation. GPIb alpha chain provides the VWF binding site, and GPIb beta contributes to surface expression of the receptor and participates in transmembrane signaling through phosphorylation of its intracellular domain. Mutations in the GPIb beta subunit have been associated with Bernard-Soulier syndrome, velocardiofacial syndrome and giant platelet disorder. The 206 amino acid precursor of GPIb beta is synthesized from a 1.0 kb mRNA expressed in plateletes and megakaryocytes. A 411 amino acid protein arising from a longer, unspliced transcript in endothelial cells has been described; however, t

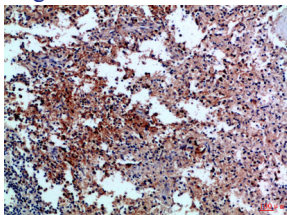
### Recommended Dilution

IHC-p: 1: 50 - 1: 200

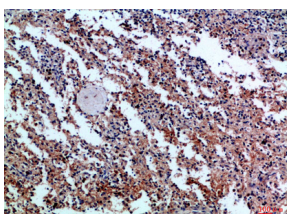
ELISA: 1: 10000 - 1: 20000

Not yet tested in other applications.

### Images



Immunohistochemical analysis of paraffin-embedded Human-spleen, antibody was diluted at 1:100



Immunohistochemical analysis of paraffin-embedded Human-spleen, antibody was diluted at 1:100

## Storage

-20°C for 1 year

501 Changsheng S Rd, Nanhu Dist, Jiaxing, Zhejiang, China

Tel: 86 21 31007137 | E-mail: [save@bt-laboratory.com](mailto:save@bt-laboratory.com) | [www.bt-laboratory.com](http://www.bt-laboratory.com)