

## CD52 Polyclonal Antibody

### Description

Product type	Primary Antibody
Code	BT-AP14832
Host	Rabbit
Isotype	IgG
Size	20ul, 50ul, 100ul
Immunogen	Synthetic peptide from human protein at AA range: 20-50
Mol wt	N/A
Species reactivity	Human, Rat, Mouse
Clonality	Polyclonal
Recommended application	IHC-p, IF, ELISA
Concentration	1 mg/ml
Full name	CAMPATH-1 antigen
Synonyms	CAMPATH-1 antigen ;CDw52;Cambridge pathology 1 antigen;Epididymal secretory protein E5;Human epididymis-specific protein 5;He5;CD antigen CD52; CAMPATH-1 antigen; CDw52; Cambridge pathology 1 antigen; Epididymal secretory protein E5; Human epididymis-specific protein 5; He5; CD antigen CD52

This product is for research use only, not for use in human, therapeutic or diagnostic procedure.

### Background

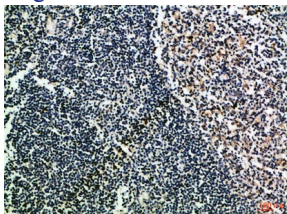
#### Recommended Dilution

IHC-p: 1: 50 - 1: 200

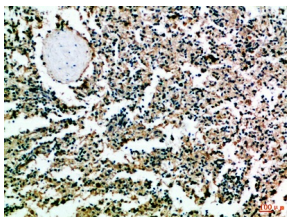
ELISA: 1: 10000 - 1: 20000

Not yet tested in other applications.

### Images



Immunohistochemical analysis of paraffin-embedded Human-tonsil, antibody was diluted at 1:100



Immunohistochemical analysis of paraffin-embedded Human-spleen, antibody was diluted at 1:100

### Storage

-20°C for 1 year

