

CD64 Polyclonal Antibody

Description

Product type	Primary Antibody
Code	BT-AP14833
Host	Rabbit
Isotype	IgG
Size	20ul, 50ul, 100ul
Immunogen	Synthetic peptide from human protein at AA range: 230-280
Mol wt	N/A
Species reactivity	Human, Rat, Mouse
Clonality	Polyclonal
Recommended application	WB, IHC-p, IF, ELISA
Concentration	1 mg/ml
Full name	High affinity immunoglobulin gamma Fc receptor I
Synonyms	High affinity immunoglobulin gamma Fc receptor I ;IgG Fc receptor I;Fc-gamma RI;FcRI;Fc-gamma RIA;FcgammaRIa;CD antigen CD64; High affinity immunoglobulin gamma Fc receptor I; IgG Fc receptor I; Fc-gamma RI; FcRI; Fc-gamma RIA; FcgammaRIa; CD antigen CD64

This product is for research use only, not for use in human, therapeutic or diagnostic procedure.

Background

This gene encodes a protein that plays an important role in the immune response. This protein is a high-affinity Fc-gamma receptor. The gene is one of three related gene family members located on chromosome 1.

Recommended Dilution

WB: 1: 500 - 1: 2000

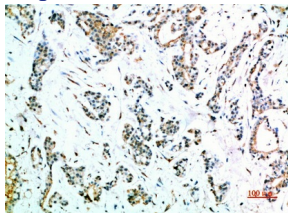
IHC-p: 1: 500 - 1: 200

ELISA: 1: 20000

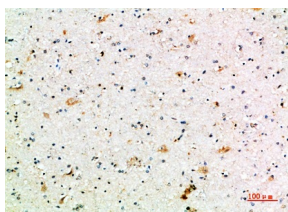
ELISA: 1: 10000 - 1: 20000

Not yet tested in other applications.

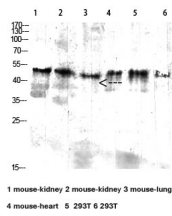
Images



Immunohistochemical analysis of paraffin-embedded human-stomach-cancer, antibody was diluted at 1:200



Immunohistochemical analysis of paraffin-embedded human-brain, antibody was diluted at 1:200



Western blot analysis of mouse-kidney lysate, antibody was diluted at 2000. Secondary antibody was diluted at 1:20000

Storage

-20°C for 1 year

501 Changsheng S Rd, Nanhu Dist, Jiaxing, Zhejiang, China

Tel: 86 21 31007137 | E-mail: save@bt-laboratory.com | www.bt-laboratory.com