

CD66a/b/c Polyclonal Antibody

Description

Product type	Primary Antibody
Code	BT-AP14834
Host	Rabbit
Isotype	IgG
Size	20ul, 50ul, 100ul
Immunogen	Synthetic peptide from human protein at AA range: 130-190
Mol wt	N/A
Species reactivity	Human, Rat, Mouse
Clonality	Polyclonal
Recommended application	IHC-p, IF, ELISA
Concentration	1 mg/ml
Full name	Carcinoembryonic antigen-related cell adhesion molecule 1/6/8
Synonyms	Carcinoembryonic antigen-related cell adhesion molecule 1/6/8 ;CD antigen CD66a/b/c

This product is for research use only, not for use in human, therapeutic or diagnostic procedure.

Background

This gene encodes a member of the carcinoembryonic antigen (CEA) gene family, which belongs to the immunoglobulin superfamily. Two subgroups of the CEA family, the CEA cell adhesion molecules and the pregnancy-specific glycoproteins, are located within a 1.2 Mb cluster on the long arm of chromosome 19. Eleven pseudogenes of the CEA cell adhesion molecule subgroup are also found in the cluster. The encoded protein was originally described in bile ducts of liver as biliary glycoprotein. Subsequently, it was found to be a cell-cell adhesion molecule detected on leukocytes, epithelia, and endothelia. The encoded protein mediates cell adhesion via homophilic as well as heterophilic binding to other proteins of the subgroup. Multiple cellular activities have been attributed to the encoded protein, including roles in the differentiation and arrangement of tissue thre

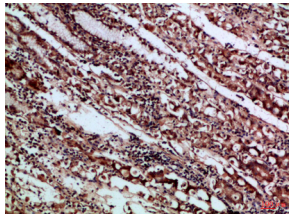
Recommended Dilution

IHC-p: 1: 50 - 1: 200

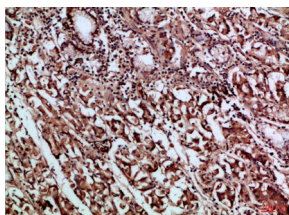
ELISA: 1: 10000 - 1: 20000

Not yet tested in other applications.

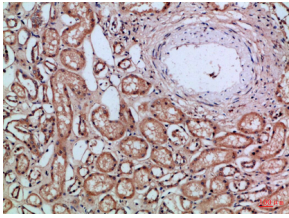
Images



Immunohistochemical analysis of paraffin-embedded Human-kidney, antibody was diluted at 1:100



Immunohistochemical analysis of paraffin-embedded Human-stomach, antibody was diluted at 1:100



Immunohistochemical analysis of paraffin-embedded Human-stomach, antibody was diluted at 1:100

Storage

-20°C for 1 year

501 Changsheng S Rd, Nanhu Dist, Jiaxing, Zhejiang, China

Tel: 86 21 31007137 | E-mail: save@bt-laboratory.com | www.bt-laboratory.com