

CD80 Polyclonal Antibody

Description

Product type	Primary Antibody
Code	BT-AP14838
Host	Rabbit
Isotype	IgG
Size	20ul, 50ul, 100ul
Immunogen	Synthetic peptide from human protein at AA range: 100-160
Mol wt	N/A
Species reactivity	Human, Rat, Mouse
Clonality	Polyclonal
Recommended application	IHC-p, IF, ELISA
Concentration	1 mg/ml
Full name	T-lymphocyte activation antigen CD80
Synonyms	T-lymphocyte activation antigen CD80 ;Activation B7-1 antigen;BB1;CTLA-4 counter-receptor B7.1;B7;CD antigen CD80; T-lymphocyte activation antigen CD80; Activation B7-1 antigen; BB1; CTLA-4 counter-receptor B7.1; B7; CD antigen CD80

This product is for research use only, not for use in human, therapeutic or diagnostic procedure.

Background

The protein encoded by this gene is a membrane receptor that is activated by the binding of CD28 or CTLA-4. The activated protein induces T-cell proliferation and cytokine production. This protein can act as a receptor for adenovirus subgroup B and may play a role in lupus neuropathy.

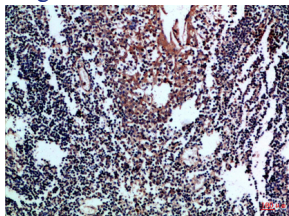
Recommended Dilution

IHC-p: 1: 50 - 1: 200

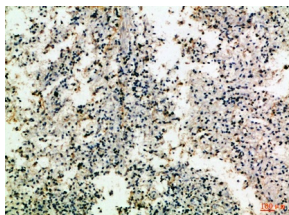
ELISA: 1: 10000 - 1: 20000

Not yet tested in other applications.

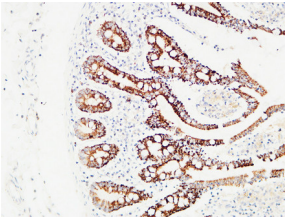
Images



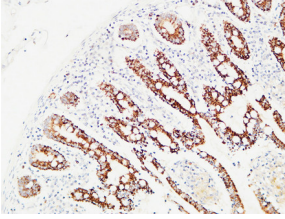
Immunohistochemical analysis of paraffin-embedded Human-tonsil, antibody was diluted at 1:100



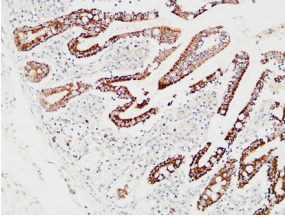
Immunohistochemical analysis of paraffin-embedded Human-spleen, antibody was diluted at 1:100



Immunohistochemical analysis of paraffin-embedded Human colon. 1, Antibody was diluted at 1:400(4°C overnight). 2, High-pressure and temperature EDTA, pH8.0 was used for antigen retrieval. 3,Secondary antibody was diluted at 1:200(room temperature, 30min).



Immunohistochemical analysis of paraffin-embedded Human colon. 1, Antibody was diluted at 1:400(4°C overnight). 2, High-pressure and temperature EDTA, pH8.0 was used for antigen retrieval. 3,Secondary antibody was diluted at 1:200(room temperature, 30min).



Immunohistochemical analysis of paraffin-embedded Human colon. 1, Antibody was diluted at 1:400(4°C overnight). 2, High-pressure and temperature EDTA, pH8.0 was used for antigen retrieval. 3,Secondary antibody was diluted at 1:200(room temperature, 30min).

Storage

-20°C for 1 year

501 Changsheng S Rd, Nanhu Dist, Jiaxing, Zhejiang, China

Tel: 86 21 31007137 | E-mail: save@bt-laboratory.com | www.bt-laboratory.com