

TEFF1 Polyclonal Antibody

Description

Product type	Primary Antibody
Code	BT-AP14848
Host	Rabbit
Isotype	IgG
Size	20ul, 50ul, 100ul
Immunogen	Synthesized peptide derived from part region of human protein
Mol wt	N/A
Species reactivity	Human, Rat, Mouse
Clonality	Polyclonal
Recommended application	WB, ELISA
Concentration	1 mg/ml
Full name	Tomoregulin-1
Synonyms	Tomoregulin-1 ;TR-1;H7365;Transmembrane protein with EGF-like and one follistatin-like domain

This product is for research use only, not for use in human, therapeutic or diagnostic procedure.

Background

May inhibit NODAL and BMP signaling during neural patterning (By similarity). May be a tumor suppressor in brain cancers.,Belongs to the tomoregulin family.,Belongs to the UPF0439 family.,Contains 1 EGF-like domain.,Contains 2 Kazal-like domains.,subunit:May interact with ST14.,tissue specificity:Expressed in brain.,tissue specificity:Expressed predominantly in brain, and at lower levels in heart, placenta and skeletal muscle. Down-regulated in brain tumors as compared to control brain tissues.,

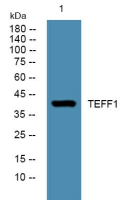
Recommended Dilution

WB: 1: 500 - 1: 2000

ELISA: 1: 5000 - 1: 20000

Not yet tested in other applications.

Images



Western blot analysis of lysates from U2OS cells, primary antibody was diluted at 1:1000, 4°C overnight

Storage

-20°C for 1 year