

## TEL Polyclonal Antibody

### Description

<b>Product type</b>	Primary Antibody
<b>Code</b>	BT-AP14851
<b>Host</b>	Rabbit
<b>Isotype</b>	IgG
<b>Size</b>	20ul, 50ul, 100ul
<b>Immunogen</b>	The antiserum was produced against synthesized peptide derived from human ETV6. AA range:371-420
<b>Mol wt</b>	53000
<b>Species reactivity</b>	Human, Mouse, Rat
<b>Clonality</b>	Polyclonal
<b>Recommended application</b>	WB, IHC-p, IF, ICC, ELISA
<b>Concentration</b>	1 mg/ml
<b>Full name</b>	Transcription factor ETV6
<b>Synonyms</b>	Transcription factor ETV6; ETV6; TEL; TEL1; Transcription factor ETV6; ETS translocation variant 6; ETS-related protein Tel1; Tel

**This product is for research use only, not for use in human, therapeutic or diagnostic procedure.**

### Background

This gene encodes an ETS family transcription factor. The product of this gene contains two functional domains: a N-terminal pointed (PNT) domain that is involved in protein-protein interactions with itself and other proteins, and a C-terminal DNA-binding domain. Gene knockout studies in mice suggest that it is required for hematopoiesis and maintenance of the developing vascular network. This gene is known to be involved in a large number of chromosomal rearrangements associated with leukemia and congenital fibrosarcoma.

### Recommended Dilution

WB: 1: 500 - 1: 2000

IHC-p: 1: 100 - 1: 300

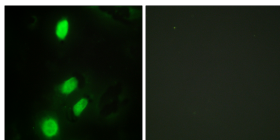
IF: 1: 200 - 1: 1000

ICC: 1: 200 - 1: 1000

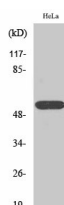
ELISA: 1: 5000

Not yet tested in other applications.

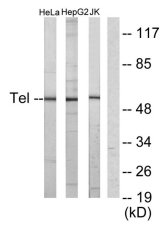
### Images



Immunofluorescence analysis of HeLa cells, using ETV6 Antibody. The picture on the right is blocked with the synthesized peptide.



Western Blot analysis of various cells using TEL Polyclonal Antibody



Western blot analysis of lysates from HeLa, HepG2, and Jurkat cells, using ETV6 Antibody. The lane on the right is blocked with the synthesized peptide.

### Storage

-20°C for 1 year

501 Changsheng S Rd, Nanhu Dist, Jiaxing, Zhejiang, China

Tel: 86 21 31007137 | E-mail: [save@bt-laboratory.com](mailto:save@bt-laboratory.com) | [www.bt-laboratory.com](http://www.bt-laboratory.com)