

Tensin-1(Phospho Tyr1326) Polyclonal Antibody

Description

Product type	Primary Antibody
Code	BT-AP14858
Host	Rabbit
Isotype	IgG
Size	20ul, 50ul, 100ul
Immunogen	Synthesized phospho-peptide around the phosphorylation site of human Tensin-1 (phospho Tyr1326)
Mol wt	185701
Species reactivity	Human, Mouse
Clonality	Polyclonal
Recommended application	WB, ELISA
Concentration	1 mg/ml
Full name	Tensin-1
Synonyms	Tensin-1; TNS1; TNS; Tensin-1

This product is for research use only, not for use in human, therapeutic or diagnostic procedure.

Background

The protein encoded by this gene localizes to focal adhesions, regions of the plasma membrane where the cell attaches to the extracellular matrix. This protein crosslinks actin filaments and contains a Src homology 2 (SH2) domain, which is often found in molecules involved in signal transduction. This protein is a substrate of calpain II. Alternative splicing results in multiple transcript variants encoding different isoforms.

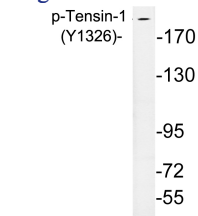
Recommended Dilution

WB: 1: 500 - 1: 2000

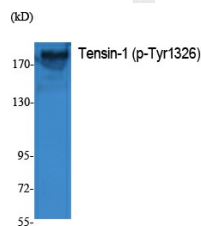
ELISA: 1: 20000

Not yet tested in other applications.

Images



Western Blot analysis of extracts from K562 cells, using Phospho-Tensin-1 (Y1326) Polyclonal Antibody.



Western blot analysis of lysates from A10 cells, using phospho-Thrensinsin-1 (Phospho-Tyr1326) antibody.

Storage

-20°C for 1 year

501 Changsheng S Rd, Nanhu Dist, Jiaxing, Zhejiang, China

Tel: 86 21 31007137 | E-mail: save@bt-laboratory.com | www.bt-laboratory.com