

Tensin-2(Phospho Tyr483) Polyclonal Antibody

Description

Product type	Primary Antibody
Code	BT-AP14860
Host	Rabbit
Isotype	IgG
Size	20ul, 50ul, 100ul
Immunogen	Synthesized phospho-peptide around the phosphorylation site of human Tensin-2 (phospho Tyr483)
Mol wt	152580
Species reactivity	Human, Mouse
Clonality	Polyclonal
Recommended application	WB, ELISA
Concentration	1 mg/ml
Full name	Tensin-like C1 domain-containing phosphatase
Synonyms	Tensin-like C1 domain-containing phosphatase; TENC1; KIAA1075; TNS2; Tensin-like C1 domain-containing phosphatase; C1 domain-containing phosphatase and tensin homolog; C1-TEN; Tensin-2

This product is for research use only, not for use in human, therapeutic or diagnostic procedure.

Background

The protein encoded by this gene belongs to the tensin family. Tensin is a focal adhesion molecule that binds to actin filaments and participates in signaling pathways. This protein plays a role in regulating cell migration. Alternative splicing occurs at this locus and three transcript variants encoding three distinct isoforms have been identified.

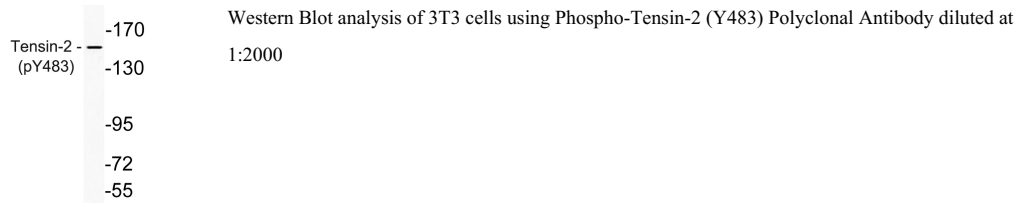
Recommended Dilution

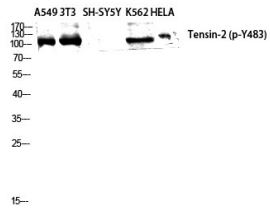
WB: 1: 500 - 1: 2000

ELISA: 1: 10000

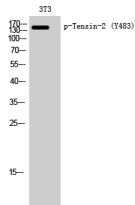
Not yet tested in other applications.

Images





Western Blot analysis of A549 NIH-3T3 SH-SY5Y K562 HELA cells using Phospho-Tensin-2 (Y483) Polyclonal Antibody diluted at 1:2000



Western blot analysis of lysate from K562 cells, using phospho-Tensin-2 (Phospho-Tyr483) antibody .

Storage

-20°C for 1 year

501 Changsheng S Rd, Nanhu Dist, Jiaxing, Zhejiang, China

Tel: 86 21 31007137 | E-mail: save@bt-laboratory.com | www.bt-laboratory.com