

## TERF2 Polyclonal Antibody

### Description

|                                |   |
|--------------------------------|---|
| <b>Product type</b>            | Primary Antibody  |
| <b>Code</b>                    | BT-AP14863  |
| <b>Host</b>                    | Rabbit  |
| <b>Isotype</b>                 | IgG   |
| <b>Size</b>                    | 20ul, 50ul, 100ul   |
| <b>Immunogen</b>               | Synthesized peptide derived from human protein . at AA range: 130-210                           |
| <b>Mol wt</b>                  | N/A   |
| <b>Species reactivity</b>      | Human, Mouse  |
| <b>Clonality</b>               | Polyclonal  |
| <b>Recommended application</b> | WB, ELISA   |
| <b>Concentration</b>           | 1 mg/ml   |
| <b>Full name</b>               | Telomeric repeat-binding factor 2   |
| <b>Synonyms</b>                | Telomeric repeat-binding factor 2 ;TTAGGG repeat-binding factor 2;Telomeric DNA-binding protein |

**This product is for research use only, not for use in human, therapeutic or diagnostic procedure.**

### Background

This gene encodes a telomere specific protein, TERF2, which is a component of the telomere nucleoprotein complex. This protein is present at telomeres in metaphase of the cell cycle, is a second negative regulator of telomere length and plays a key role in the protective activity of telomeres. While having similar telomere binding activity and domain organization, TERF2 differs from TERF1 in that its N terminus is basic rather than acidic.

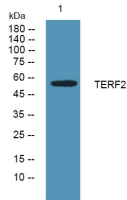
### Recommended Dilution

WB: 1: 500 - 1: 2000

ELISA: 1: 5000 - 1: 20000

Not yet tested in other applications.

### Images



Western blot analysis of lysates from SH-SY5Y cells, primary antibody was diluted at 1:1000, 4°C overnight

### Storage

-20°C for 1 year