

TERT(Phospho Ser227) Polyclonal Antibody

Description

Product type	Primary Antibody
Code	BT-AP14864
Host	Rabbit
Isotype	IgG
Size	20ul, 50ul, 100ul
Immunogen	The antiserum was produced against synthesized peptide derived from human Telomerase around the phosphorylation site of Ser227. AA range:196-245
Mol wt	126997
Species reactivity	Human, Rat, Mouse
Clonality	Polyclonal
Recommended application	IF, ICC, ELISA
Concentration	1 mg/ml
Full name	Telomerase reverse transcriptase
Synonyms	Telomerase reverse transcriptase; TERT; EST2; TCS1; TRT; Telomerase reverse transcriptase; HEST2; Telomerase catalytic subunit; Telomerase-associated protein 2; TP2

This product is for research use only, not for use in human, therapeutic or diagnostic procedure.

Background

Telomerase is a ribonucleoprotein polymerase that maintains telomere ends by addition of the telomere repeat TTAGGG. The enzyme consists of a protein component with reverse transcriptase activity, encoded by this gene, and an RNA component which serves as a template for the telomere repeat. Telomerase expression plays a role in cellular senescence, as it is normally repressed in postnatal somatic cells resulting in progressive shortening of telomeres. Deregulation of telomerase expression in somatic cells may be involved in oncogenesis. Studies in mouse suggest that telomerase also participates in chromosomal repair, since de novo synthesis of telomere repeats may occur at double-stranded breaks. Alternatively spliced variants encoding different isoforms of telomerase reverse transcriptase have been identified; the full-length sequence of some variants has not been determined. Alternative sp

Recommended Dilution

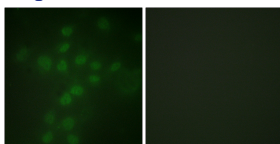
IF: 1: 200 - 1: 1000

ICC: 1: 200 - 1: 1000

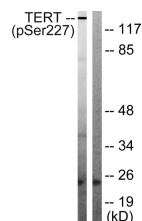
ELISA: 1: 10000

Not yet tested in other applications.

Images



Immunofluorescence analysis of HUVEC cells, using Telomerase (Phospho-Ser227) Antibody. The picture on the right is blocked with the phospho peptide.



Western blot analysis of Telomerase (Phospho-Ser227) Antibody. The lane on the right is blocked with the Telomerase (Phospho-Ser227) peptide.

Storage

-20°C for 1 year

501 Changsheng S Rd, Nanhu Dist, Jiaxing, Zhejiang, China

Tel: 86 21 31007137 | E-mail: save@bt-laboratory.com | www.bt-laboratory.com