

TF2LX Polyclonal Antibody

Description

Product type	Primary Antibody
Code	BT-AP14880
Host	Rabbit
Isotype	IgG
Size	20ul, 50ul, 100ul
Immunogen	Synthesized peptide derived from part region of human protein
Mol wt	N/A
Species reactivity	Human, Rat, Mouse
Clonality	Polyclonal
Recommended application	WB, ELISA
Concentration	1 mg/ml
Full name	Homeobox protein TGIF2LX
Synonyms	Homeobox protein TGIF2LX ;TGF-beta-induced transcription factor 2-like protein;TGFB-induced factor 2-like protein, X-linked;TGIF-like on the X

This product is for research use only, not for use in human, therapeutic or diagnostic procedure.

Background

This gene encodes a member of the TALE/TGIF homeobox family of transcription factors. Testis-specific expression suggests that this gene may play a role in spermatogenesis. A homolog of this gene lies within the male specific region of chromosome Y, in a block of sequence that is thought to be the result of a large X-to-Y transposition.

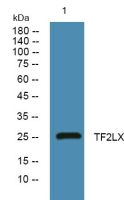
Recommended Dilution

WB: 1: 500 - 1: 2000

ELISA: 1: 5000 - 1: 20000

Not yet tested in other applications.

Images



Western blot analysis of lysates from SH-SY5Y cells, primary antibody was diluted at 1:1000, 4°C overnight

Storage

-20°C for 1 year