

## CEAM7 Polyclonal Antibody

### Description

<b>Product type</b>	Primary Antibody
<b>Code</b>	BT-AP14890
<b>Host</b>	Rabbit
<b>Isotype</b>	IgG
<b>Size</b>	20ul, 50ul, 100ul
<b>Immunogen</b>	Synthesized peptide derived from part region of human protein
<b>Mol wt</b>	N/A
<b>Species reactivity</b>	Human, Rat, Mouse
<b>Clonality</b>	Polyclonal
<b>Recommended application</b>	WB, ELISA
<b>Concentration</b>	1 mg/ml
<b>Full name</b>	Carcinoembryonic antigen-related cell adhesion molecule 7
<b>Synonyms</b>	Carcinoembryonic antigen-related cell adhesion molecule 7 ;Carcinoembryonic antigen CGM2

**This product is for research use only, not for use in human, therapeutic or diagnostic procedure.**

### Background

This gene encodes a cell surface glycoprotein and member of the carcinoembryonic antigen (CEA) family of proteins. Expression of this gene may be downregulated in colon and rectal cancer. Additionally, lower expression levels of this gene may be predictive of rectal cancer recurrence. This gene is present in a CEA family gene cluster on chromosome 19. Alternative splicing results in multiple transcript variants.

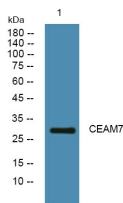
### Recommended Dilution

WB: 1: 500 - 1: 2000

ELISA: 1: 5000 - 1: 20000

Not yet tested in other applications.

### Images



Western blot analysis of lysates from A431 cells, primary antibody was diluted at 1:1000, 4°C overnight

### Storage

-20°C for 1 year