

CEAM8 Polyclonal Antibody

Description

Product type	Primary Antibody
Code	BT-AP14891
Host	Rabbit
Isotype	IgG
Size	20ul, 50ul, 100ul
Immunogen	Synthesized peptide derived from part region of human protein
Mol wt	N/A
Species reactivity	Human, Rat, Mouse
Clonality	Polyclonal
Recommended application	WB, ELISA
Concentration	1 mg/ml
Full name	Carcinoembryonic antigen-related cell adhesion molecule 8
Synonyms	Carcinoembryonic antigen-related cell adhesion molecule 8 ;CD67 antigen;Carcinoembryonic antigen CGM6;Non-specific cross-reacting antigen NCA-95;CD antigen CD66b

This product is for research use only, not for use in human, therapeutic or diagnostic procedure.

Background

Belongs to the immunoglobulin superfamily. CEA family.,Contains 1 Ig-like V-type (immunoglobulin-like) domain.,Contains 2 Ig-like C2-type (immunoglobulin-like) domains.,tissue specificity:Expressed in leukocytes of chronic myeloid Leukemia patients and bone marrow.,

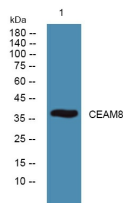
Recommended Dilution

WB: 1: 500 - 1: 2000

ELISA: 1: 5000 - 1: 20000

Not yet tested in other applications.

Images



Western blot analysis of lysates from K562 cells, primary antibody was diluted at 1:1000, 4°C overnight

Storage

-20°C for 1 year