

## CEGT Polyclonal Antibody

### Description

<b>Product type</b>	Primary Antibody
<b>Code</b>	BT-AP14892
<b>Host</b>	Rabbit
<b>Isotype</b>	IgG
<b>Size</b>	20ul, 50ul, 100ul
<b>Immunogen</b>	Synthesized peptide derived from part region of human protein
<b>Mol wt</b>	N/A
<b>Species reactivity</b>	Human, Mouse, Rat
<b>Clonality</b>	Polyclonal
<b>Recommended application</b>	WB, ELISA
<b>Concentration</b>	1 mg/ml
<b>Full name</b>	Ceramide glucosyltransferase
<b>Synonyms</b>	Ceramide glucosyltransferase ;EC 2.4.1.80;GLCT-1;Glucosylceramide synthase;GCS;UDP-glucose ceramide glucosyltransferase;UDP-glucose:N-acylsphingosine D-glucosyltransferase

**This product is for research use only, not for use in human, therapeutic or diagnostic procedure.**

### Background

This gene encodes an enzyme that catalyzes the first glycosylation step in the biosynthesis of glycosphingolipids, which are membrane components containing lipid and sugar moieties. The product of this reaction is glucosylceramide, which is the core structure of many glycosphingolipids.

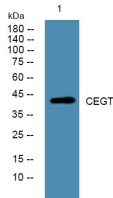
### Recommended Dilution

WB: 1: 500 - 1: 2000

ELISA: 1: 5000 - 1: 20000

Not yet tested in other applications.

### Images



Western blot analysis of lysates from K562 cells, primary antibody was diluted at 1:1000, 4°C overnight

### Storage

-20°C for 1 year