

CENPU Polyclonal Antibody

Description

Product type	Primary Antibody
Code	BT-AP14915
Host	Rabbit
Isotype	IgG
Size	20ul, 50ul, 100ul
Immunogen	Synthesized peptide derived from human protein . at AA range: 160-240
Mol wt	N/A
Species reactivity	Human, Rat, Mouse
Clonality	Polyclonal
Recommended application	WB, ELISA
Concentration	1 mg/ml
Full name	Centromere protein U
Synonyms	Centromere protein U ;CENP-U;Interphase centromere complex protein 24;KSHV latent nuclear antigen-interacting protein 1;MLF1-interacting protein;Polo-box-interacting protein 1;centromere pro

This product is for research use only, not for use in human, therapeutic or diagnostic procedure.

Background

The centromere is a specialized chromatin domain, present throughout the cell cycle, that acts as a platform on which the transient assembly of the kinetochore occurs during mitosis. All active centromeres are characterized by the presence of long arrays of nucleosomes in which CENPA (MIM 117139) replaces histone H3 (see MIM 601128). MLF1IP, or CENPU, is an additional factor required for centromere assembly (Foltz et al., 2006)

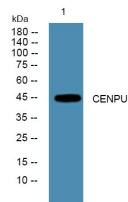
Recommended Dilution

WB: 1: 500 - 1: 2000

ELISA: 1: 5000 - 1: 20000

Not yet tested in other applications.

Images



Western blot analysis of lysates from SH-SY5Y cells, primary antibody was diluted at 1:1000, 4°C overnight

Storage

-20°C for 1 year