

TH(Phospho Ser19) Polyclonal Antibody

Description

Product type	Primary Antibody
Code	BT-AP14922
Host	Rabbit
Isotype	IgG
Size	20ul, 50ul, 100ul
Immunogen	The antiserum was produced against synthesized peptide derived from human Tyrosine Hydroxylase around the phosphorylation site of Ser19. AA range:10-59
Mol wt	58524
Species reactivity	Human, Mouse, Rat
Clonality	Polyclonal
Recommended application	WB, IHC-p, IF, ICC, ELISA
Concentration	1 mg/ml
Full name	Tyrosine 3-monooxygenase
Synonyms	Tyrosine 3-monooxygenase; TH; TYH; Tyrosine 3-monooxygenase; Tyrosine 3-hydroxylase; TH

This product is for research use only, not for use in human, therapeutic or diagnostic procedure.

Background

The protein encoded by this gene is involved in the conversion of tyrosine to dopamine. It is the rate-limiting enzyme in the synthesis of catecholamines, hence plays a key role in the physiology of adrenergic neurons. Mutations in this gene have been associated with autosomal recessive Segawa syndrome. Alternatively spliced transcript variants encoding different isoforms have been noted for this gene.

Recommended Dilution

WB: 1: 500 - 1: 2000

IHC-p: 1: 100 - 1: 300

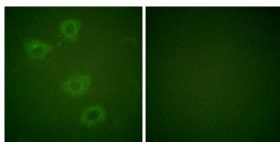
IF: 1: 200 - 1: 1000

ICC: 1: 200 - 1: 1000

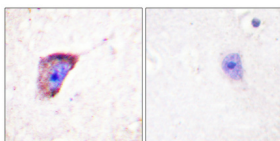
ELISA: 1: 5000

Not yet tested in other applications.

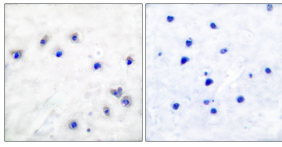
Images



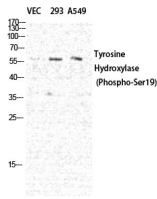
Immunofluorescence analysis of HUVEC cells, using Tyrosine Hydroxylase (Phospho-Ser19) Antibody. The picture on the right is blocked with the phospho peptide.



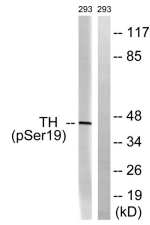
Immunohistochemical analysis of paraffin-embedded Human brain. Antibody was diluted at 1:100(4°C overnight). High-pressure and temperature Tris-EDTA,pH8.0 was used for antigen retrieval. Negative contrl (right) obtained from antibody was pre-absorbed by immunogen peptide.



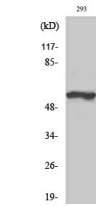
Immunohistochemistry analysis of paraffin-embedded human brain, using Tyrosine Hydroxylase (Phospho-Ser19) Antibody. The picture on the right is blocked with the phospho peptide.



Western Blot analysis of various cells using Phospho-TH (S19) Polyclonal Antibody diluted at 1:1000



Western Blot analysis of 293 cells using Phospho-TH (S19) Polyclonal Antibody diluted at 1:1000



Western blot analysis of lysates from 293 cells treated with Insulin 0.01U/ml 30', using Tyrosine Hydroxylase (Phospho-Ser19) Antibody. The lane on the right is blocked with the phospho peptide.

Storage

-20°C for 1 year

501 Changsheng S Rd, Nanhu Dist, Jiaxing, Zhejiang, China

Tel: 86 21 31007137 | E-mail: save@bt-laboratory.com | www.bt-laboratory.com