

## TH(Phospho Ser8) Polyclonal Antibody

### Description

<b>Product type</b>	Primary Antibody
<b>Code</b>	BT-AP14925
<b>Host</b>	Rabbit
<b>Isotype</b>	IgG
<b>Size</b>	20ul, 50ul, 100ul
<b>Immunogen</b>	The antiserum was produced against synthesized peptide derived from mouse Tyrosine Hydroxylase around the phosphorylation site of Ser8. AA range:2-51
<b>Mol wt</b>	58524
<b>Species reactivity</b>	Rat
<b>Clonality</b>	Polyclonal
<b>Recommended application</b>	WB, IHC-p, IF, ELISA
<b>Concentration</b>	1 mg/ml
<b>Full name</b>	Tyrosine 3-monoxygenase
<b>Synonyms</b>	Tyrosine 3-monoxygenase; TH; TYH; Tyrosine 3-monoxygenase; Tyrosine 3-hydroxylase; TH

**This product is for research use only, not for use in human, therapeutic or diagnostic procedure.**

### Background

The tyrosine hydroxylase encoded by TH is involved in the conversion of tyrosine to dopamine. It is the rate-limiting enzyme in the synthesis of catecholamines, hence plays a key role in the physiology of adrenergic neurons. Mutations in this gene have been associated with autosomal recessive Segawa syndrome. Alternatively spliced transcript variants encoding different isoforms have been noted for this gene.

### Recommended Dilution

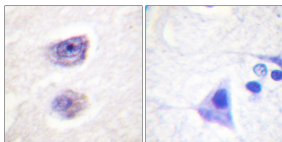
WB: 1: 500 - 1: 2000

IHC-p: 1: 100 - 1: 300

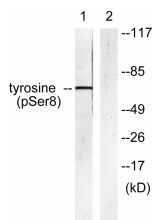
ELISA: 1: 5000

Not yet tested in other applications.

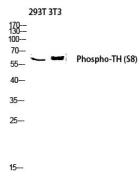
### Images



Immunohistochemistry analysis of paraffin-embedded human brain, using Tyrosine Hydroxylase (Phospho-Ser8) Antibody. The picture on the right is blocked with the phospho peptide.



Western blot analysis of 293T 3T3 lysis using Phospho-TH (S8) antibody. Antibody was diluted at 1:1000



Western blot analysis of lysates from HepG2 cells treated with Anisomycin 25ug/ml 30', using Tyrosine Hydroxylase (Phospho-Ser8) Antibody. The lane on the right is blocked with the phospho peptide.

### Storage

-20°C for 1 year

501 Changsheng S Rd, Nanhu Dist, Jiaxing, Zhejiang, China

Tel: 86 21 31007137 | E-mail: [save@bt-laboratory.com](mailto:save@bt-laboratory.com) | [www.bt-laboratory.com](http://www.bt-laboratory.com)