

THIM Polyclonal Antibody

Description

Product type	Primary Antibody
Code	BT-AP14933
Host	Rabbit
Isotype	IgG
Size	20ul, 50ul, 100ul
Immunogen	Synthesized peptide derived from human protein . at AA range: 110-190
Mol wt	N/A
Species reactivity	Human, Rat, Mouse
Clonality	Polyclonal
Recommended application	WB, ELISA
Concentration	1 mg/ml
Full name	3-ketoacyl-CoA thiolase, mitochondrial
Synonyms	3-ketoacyl-CoA thiolase, mitochondrial ;EC 2.3.1.16;Acetyl-CoA acyltransferase;Beta-ketothiolase;Mitochondrial 3-oxoacyl-CoA thiolase;T1

This product is for research use only, not for use in human, therapeutic or diagnostic procedure.

Background

The encoded protein catalyzes the last step of the mitochondrial fatty acid beta-oxidation spiral. Unlike most mitochondrial matrix proteins, it contains a non-cleavable amino-terminal targeting signal.

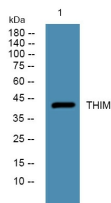
Recommended Dilution

WB: 1: 500 - 1: 2000

ELISA: 1: 5000 - 1: 20000

Not yet tested in other applications.

Images



Western blot analysis of lysates from DU145 cells, primary antibody was diluted at 1:1000, 4°C overnight

Storage

-20°C for 1 year