

THIOM Polyclonal Antibody

Description

| | |
|--------------------------------|---------------------------------------------------------------|
| Product type | Primary Antibody |
| Code | BT-AP14934 |
| Host | Rabbit |
| Isotype | IgG |
| Size | 20ul, 50ul, 100ul |
| Immunogen | Synthesized peptide derived from part region of human protein |
| Mol wt | N/A |
| Species reactivity | Human, Mouse, Rat |
| Clonality | Polyclonal |
| Recommended application | WB, ELISA |
| Concentration | 1 mg/ml |
| Full name | Thioredoxin, mitochondrial |
| Synonyms | Thioredoxin, mitochondrial ;MTRX;Mt-Trx;Thioredoxin-2 |

This product is for research use only, not for use in human, therapeutic or diagnostic procedure.

Background

This nuclear gene encodes a mitochondrial member of the thioredoxin family, a group of small multifunctional redox-active proteins. The encoded protein may play important roles in the regulation of the mitochondrial membrane potential and in protection against oxidant-induced apoptosis.

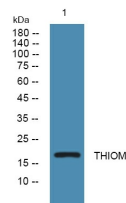
Recommended Dilution

WB: 1: 500 - 1: 2000

ELISA: 1: 5000 - 1: 20000

Not yet tested in other applications.

Images



Western blot analysis of lysates from SH-SY5Y cells, primary antibody was diluted at 1:1000, 4°C overnight

Storage

-20°C for 1 year