

Thioredoxin Polyclonal Antibody

Description

Product type	Primary Antibody
Code	BT-AP14935
Host	Rabbit
Isotype	IgG
Size	20ul, 50ul, 100ul
Immunogen	Synthesized peptide derived from human Thioredoxin. at AA range: 52-101
Mol wt	N/A
Species reactivity	Human, Mouse, Rat
Clonality	Polyclonal
Recommended application	WB, IHC-p, IF, ELISA
Concentration	1 mg/ml
Full name	Thioredoxin
Synonyms	Thioredoxin; Thioredoxin; Trx; ATL-derived factor; ADF; Surface-associated sulphhydryl protein; SASP

This product is for research use only, not for use in human, therapeutic or diagnostic procedure.

Background

The protein encoded by this gene acts as a homodimer and is involved in many redox reactions. The encoded protein is active in the reversible S-nitrosylation of cysteines in certain proteins, which is part of the response to intracellular nitric oxide. This protein is found in the cytoplasm. Two transcript variants encoding different isoforms have been found for this gene.

Recommended Dilution

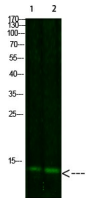
WB: 1: 500 - 1: 2000

IHC-p: 100 - 1: 300

ELISA: 1: 10000 - 1: 20000

Not yet tested in other applications.

Images



Western Blot analysis of 1,mouse-liver 2,hela cells using primary antibody diluted at 1:1000(4°C overnight).

Secondary antibody:Goat Anti-rabbit IgG IRDye 800(diluted at 1:5000, 25°C, 1 hour)

Storage

-20°C for 1 year