

CHOP(Phospho Ser30) Polyclonal Antibody

Description

Product type	Primary Antibody
Code	BT-AP14961
Host	Rabbit
Isotype	IgG
Size	20ul, 50ul, 100ul
Immunogen	The antiserum was produced against synthesized peptide derived from human CHOP around the phosphorylation site of Ser30. AA range:15-64
Mol wt	19175
Species reactivity	Human, Mouse
Clonality	Polyclonal
Recommended application	WB, IHC-p, IF, ICC, ELISA
Concentration	1 mg/ml
Full name	DNA damage-inducible transcript 3 protein
Synonyms	DNA damage-inducible transcript 3 protein; DDIT3; CHOP; CHOP10; GADD153; DNA damage-inducible transcript 3 protein; DDIT-3; C/EBP-homologous protein; CHOP; C/EBP-homologous protein 10; CHOP-10; Growth arrest and DNA damage-inducible protein GADD153

This product is for research use only, not for use in human, therapeutic or diagnostic procedure.

Background

This gene encodes a member of the CCAAT/enhancer-binding protein (C/EBP) family of transcription factors. The protein functions as a dominant-negative inhibitor by forming heterodimers with other C/EBP members, such as C/EBP and LAP (liver activator protein), and preventing their DNA binding activity. The protein is implicated in adipogenesis and erythropoiesis, is activated by endoplasmic reticulum stress, and promotes apoptosis. Fusion of this gene and FUS on chromosome 16 or EWSR1 on chromosome 22 induced by translocation generates chimeric proteins in myxoid liposarcomas or Ewing sarcoma. Multiple alternatively spliced transcript variants encoding two isoforms with different length have been identified.

Recommended Dilution

WB: 1: 500 - 1: 2000

IHC-p: 1: 100 - 1: 300

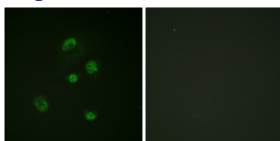
IF: 1: 200 - 1: 1000

ICC: 1: 200 - 1: 1000

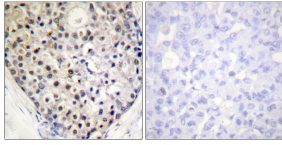
ELISA: 1: 20000

Not yet tested in other applications.

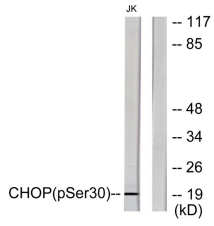
Images



Immunofluorescence analysis of A549 cells, using CHOP (Phospho-Ser30) Antibody. The picture on the right is blocked with the phospho peptide.



Immunohistochemistry analysis of paraffin-embedded human breast carcinoma, using CHOP (Phospho-Ser30) Antibody. The picture on the right is blocked with the phospho peptide.



Western blot analysis of lysates from Jurkat cells treated with PMA 125ng/ml 30', using CHOP (Phospho-Ser30) Antibody. The lane on the right is blocked with the phospho peptide.

Storage

-20°C for 1 year

501 Changsheng S Rd, Nanhu Dist, Jiaxing, Zhejiang, China

Tel: 86 21 31007137 | E-mail: save@bt-laboratory.com | www.bt-laboratory.com