

## TIM-1 Polyclonal Antibody

### Description

Product type	Primary Antibody
Code	BT-AP14973
Host	Rabbit
Isotype	IgG
Size	20ul, 50ul, 100ul
Immunogen	Synthetic peptide from human protein at AA range: 40-100
Mol wt	N/A
Species reactivity	Human, Rat, Mouse
Clonality	Polyclonal
Recommended application	WB, ELISA
Concentration	1 mg/ml
Full name	Hepatitis A virus cellular receptor 1
Synonyms	Hepatitis A virus cellular receptor 1 ;HAVcr-1;Kidney injury molecule 1;KIM-1;T-cell immunoglobulin and mucin domain-containing protein 1;TIMD-1;T-cell membrane protein 1;TIM-1;TIM; Hepatitis A virus cellular receptor 1; HAVcr-1; Kidney injury molecule 1; KIM-1; T-cell immunoglobulin and mucin domain-containing protein 1; TIMD-1; T-cell membrane protein 1; TIM-1; TIM

This product is for research use only, not for use in human, therapeutic or diagnostic procedure.

### Background

The protein encoded by this gene is a membrane receptor for both human hepatitis A virus (HHAV) and TIMD4. The encoded protein may be involved in the moderation of asthma and allergic diseases. The reference genome represents an allele that retains a MTTVP amino acid segment that confers protection against atopy in HHAV seropositive individuals. Alternative splicing of this gene results in multiple transcript variants. Related pseudogenes have been identified on chromosomes 4, 12 and 19.

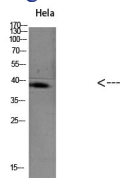
### Recommended Dilution

WB: 1: 500 - 1: 2000

ELISA: 1: 10000 - 1: 20000

Not yet tested in other applications.

### Images



Western blot analysis of KB HeLa 293T mouse-brain lysate, antibody was diluted at 1000. Secondary antibody was diluted at 1:20000

### Storage

-20°C for 1 year