

CKLF7 Polyclonal Antibody

Description

Product type	Primary Antibody
Code	BT-AP14974
Host	Rabbit
Isotype	IgG
Size	20ul, 50ul, 100ul
Immunogen	Synthesized peptide derived from part region of human protein
Mol wt	N/A
Species reactivity	Human, Mouse
Clonality	Polyclonal
Recommended application	WB, ELISA
Concentration	1 mg/ml
Full name	CKLF-like MARVEL transmembrane domain-containing protein 7
Synonyms	CKLF-like MARVEL transmembrane domain-containing protein 7 ;Chemokine-like factor superfamily member 7

This product is for research use only, not for use in human, therapeutic or diagnostic procedure.

Background

This gene belongs to the chemokine-like factor gene superfamily, a novel family that is similar to the chemokine and transmembrane 4 superfamilies. This gene is one of several chemokine-like factor genes located in a cluster on chromosome 3. This gene acts as a tumor suppressor that regulates G1/S transition in the cell cycle, and epidermal growth factor receptor/protein kinase B signaling during tumor pathogenesis. Alternative splicing results in multiple transcript variants encoding different isoforms.

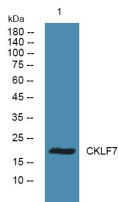
Recommended Dilution

WB: 1: 500 - 1: 2000

ELISA: 1: 5000 - 1: 20000

Not yet tested in other applications.

Images



Western blot analysis of lysates from U2OS cells, primary antibody was diluted at 1:1000, 4°C overnight

Storage

-20°C for 1 year