

TIMD4 Polyclonal Antibody

Description

Product type	Primary Antibody
Code	BT-AP14975
Host	Rabbit
Isotype	IgG
Size	20ul, 50ul, 100ul
Immunogen	Synthesized peptide derived from part region of human protein
Mol wt	N/A
Species reactivity	Human, Mouse
Clonality	Polyclonal
Recommended application	WB, ELISA
Concentration	1 mg/ml
Full name	T-cell immunoglobulin and mucin domain-containing protein 4
Synonyms	T-cell immunoglobulin and mucin domain-containing protein 4 ;TIMD-4;T-cell membrane protein 4;TIM-4

This product is for research use only, not for use in human, therapeutic or diagnostic procedure.

Background

The sequence shown here is derived from an Ensembl automatic analysis pipeline and should be considered as preliminary data.,Recognizes phosphatidyl serine via its immunoglobulin domain.,Phosphatidylserine receptor that enhances the engulfment of apoptotic cells. Involved in regulating T-cell proliferation and lymphotoxin signaling. Ligand for HAVCR1/TIMD1.,Belongs to the immunoglobulin superfamily. TIM family.,Contains 1 Ig-like V-type (immunoglobulin-like) domain.,

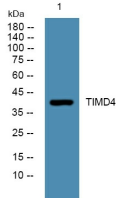
Recommended Dilution

WB: 1: 500 - 1: 2000

ELISA: 1: 5000 - 1: 20000

Not yet tested in other applications.

Images



Western blot analysis of lysates from Jarkat cells, primary antibody was diluted at 1:1000, 4°C overnight

Storage

-20°C for 1 year