

CKR-5 Polyclonal Antibody

Description

Product type	Primary Antibody
Code	BT-AP14980
Host	Rabbit
Isotype	IgG
Size	20ul, 50ul, 100ul
Immunogen	Synthetic peptide from human protein at AA range: 151-200
Mol wt	N/A
Species reactivity	Human, Rat, Mouse
Clonality	Polyclonal
Recommended application	WB, IHC-p, IF, ELISA
Concentration	1 mg/ml
Full name	C-C chemokine receptor type 5
Synonyms	C-C chemokine receptor type 5 ;C-C CKR-5;CC-CKR-5;CCR-5;CCR5;CHEMR13;HIV-1 fusion coreceptor;CD antigen CD195; C-C chemokine receptor type 5; C-C CKR-5; CC-CKR-5; CCR-5; CCR5; CHEMR13; HIV-1 fusion coreceptor; CD antigen CD195

This product is for research use only, not for use in human, therapeutic or diagnostic procedure.

Background

This gene encodes a member of the beta chemokine receptor family, which is predicted to be a seven transmembrane protein similar to G protein-coupled receptors. This protein is expressed by T cells and macrophages, and is known to be an important co-receptor for macrophage-tropic virus, including HIV, to enter host cells. Defective alleles of this gene have been associated with the HIV infection resistance. The ligands of this receptor include monocyte chemoattractant protein 2 (MCP-2), macrophage inflammatory protein 1 alpha (MIP-1 alpha), macrophage inflammatory protein 1 beta (MIP-1 beta) and regulated on activation normal T expressed and secreted protein (RANTES). Expression of this gene was also detected in a promyeloblastic cell line, suggesting that this protein may play a role in granulocyte lineage proliferation and differentiation. This gene is located at the chemok

Recommended Dilution

WB: 1: 500 - 1: 2000

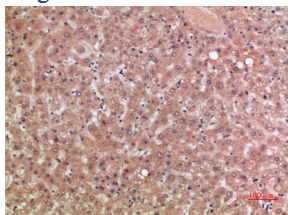
IHC-p: 1: 500 - 1: 200

ELISA: 1: 20000

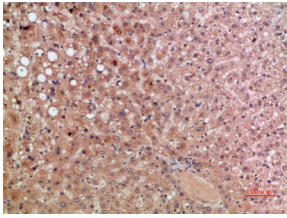
ELISA: 1: 10000 - 1: 20000

Not yet tested in other applications.

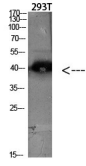
Images



Immunohistochemical analysis of paraffin-embedded human-liver, antibody was diluted at 1:200



Immunohistochemical analysis of paraffin-embedded human-liver, antibody was diluted at 1:200



Western blot analysis of 293T lysate, antibody was diluted at 2000. Secondary antibody was diluted at 1:20000

Storage

-20°C for 1 year

501 Changsheng S Rd, Nanhu Dist, Jiaxing, Zhejiang, China

Tel: 86 21 31007137 | E-mail: save@bt-laboratory.com | www.bt-laboratory.com