

Claudin-7(Phospho Tyr210) Polyclonal Antibody

Description

Product type	Primary Antibody
Code	BT-AP14990
Host	Rabbit
Isotype	IgG
Size	20ul, 50ul, 100ul
Immunogen	The antiserum was produced against synthesized peptide derived from human Claudin 7 around the phosphorylation site of Tyr210. AA range:162-211
Mol wt	22390
Species reactivity	Human, Mouse, Rat
Clonality	Polyclonal
Recommended application	WB, ELISA
Concentration	1 mg/ml
Full name	Claudin-7
Synonyms	Claudin-7; CLDN7; CEPTRL2; CPETRL2; Claudin-7; CLDN-7

This product is for research use only, not for use in human, therapeutic or diagnostic procedure.

Background

This gene encodes a member of the claudin family. Claudins are integral membrane proteins and components of tight junction strands. Tight junction strands serve as a physical barrier to prevent solutes and water from passing freely through the paracellular space between epithelial or endothelial cell sheets, and also play critical roles in maintaining cell polarity and signal transductions. Differential expression of this gene has been observed in different types of malignancies, including breast cancer, ovarian cancer, hepatocellular carcinomas, urinary tumors, prostate cancer, lung cancer, head and neck cancers, thyroid carcinomas, etc.. Alternatively spliced transcript variants encoding different isoforms have been found.

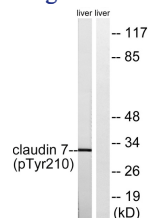
Recommended Dilution

WB: 1: 500 - 1: 2000

ELISA: 1: 5000

Not yet tested in other applications.

Images



Western blot analysis of lysates from rat liver, using Claudin 7 (Phospho-Tyr210) Antibody. The lane on the right is blocked with the phospho peptide.

Storage

-20°C for 1 year