

TIS11B(Phospho Ser92) Polyclonal Antibody

Description

Product type	Primary Antibody
Code	BT-AP14991
Host	Rabbit
Isotype	IgG
Size	20ul, 50ul, 100ul
Immunogen	The antiserum was produced against synthesized peptide derived from human TISB around the phosphorylation site of Ser92. AA range:58-107
Mol wt	36314
Species reactivity	Human, Mouse, Rat
Clonality	Polyclonal
Recommended application	WB, ELISA
Concentration	1 mg/ml
Full name	Zinc finger protein 36 C3H1 type-like 1
Synonyms	Zinc finger protein 36 C3H1 type-like 1; ZFP36L1; BERG36; BRF1; ERF1; RNF162B; TIS11B; Zinc finger protein 36; C3H1 type-like 1; Butyrate response factor 1; EGF-response factor 1; ERF-1; Protein TIS11B

This product is for research use only, not for use in human, therapeutic or diagnostic procedure.

Background

This gene is a member of the TIS11 family of early response genes, which are induced by various agonists such as the phorbol ester TPA and the polypeptide mitogen EGF. This gene is well conserved across species and has a promoter that contains motifs seen in other early-response genes. The encoded protein contains a distinguishing putative zinc finger domain with a repeating cys-his motif. This putative nuclear transcription factor most likely functions in regulating the response to growth factors. Alternatively spliced transcript variants encoding different isoforms have been found for this gene.

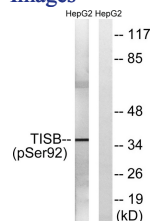
Recommended Dilution

WB: 1: 500 - 1: 2000

ELISA: 1: 10000

Not yet tested in other applications.

Images



Western blot analysis of lysates from HepG2 cells, using TISB (Phospho-Ser92) Antibody. The lane on the right is blocked with the phospho peptide.

Storage

-20°C for 1 year