

TLX1 Polyclonal Antibody

Description

| | |
|--------------------------------|---------------------------------------------------------------------------------------------------------------------|
| Product type | Primary Antibody |
| Code | BT-AP15010 |
| Host | Rabbit |
| Isotype | IgG |
| Size | 20ul, 50ul, 100ul |
| Immunogen | Synthesized peptide derived from part region of human protein |
| Mol wt | N/A |
| Species reactivity | Human, Mouse |
| Clonality | Polyclonal |
| Recommended application | WB, ELISA |
| Concentration | 1 mg/ml |
| Full name | T-cell leukemia homeobox protein 1 |
| Synonyms | T-cell leukemia homeobox protein 1 ;Homeobox protein Hox-11;Proto-oncogene TCL-3;T-cell leukemia/lymphoma protein 3 |

This product is for research use only, not for use in human, therapeutic or diagnostic procedure.

Background

This gene encodes a nuclear transcription factor that belongs to the NK-linked or NK-like (NKL) subfamily of homeobox genes. The encoded protein is required for normal development of the spleen during embryogenesis. This protein is also involved in specification of neuronal cell fates. Ectopic expression of this gene due to chromosomal translocations is associated with certain T-cell acute lymphoblastic leukemias. Alternate splicing results in multiple transcript variants.

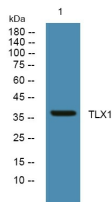
Recommended Dilution

WB: 1: 500 - 1: 2000

ELISA: 1: 5000 - 1: 20000

Not yet tested in other applications.

Images



Western blot analysis of lysates from HCT116 cells, primary antibody was diluted at 1:1000, 4°C overnight

Storage

-20°C for 1 year