

TMEPAI Polyclonal Antibody

Description

Product type	Primary Antibody
Code	BT-AP15028
Host	Rabbit
Isotype	IgG
Size	20ul, 50ul, 100ul
Immunogen	Synthetic peptide from human protein at AA range: 240-287
Mol wt	N/A
Species reactivity	Human, Rat, Mouse
Clonality	Polyclonal
Recommended application	WB, ELISA
Concentration	1 mg/ml
Full name	TMEPAI
Synonyms	TMEPAI; Transmembrane prostate androgen-induced protein; Solid tumor-associated 1 protein

This product is for research use only, not for use in human, therapeutic or diagnostic procedure.

Background

This gene encodes a transmembrane protein that contains a Smad interacting motif (SIM). Expression of this gene is induced by androgens and transforming growth factor beta, and the encoded protein suppresses the androgen receptor and transforming growth factor beta signaling pathways through interactions with Smad proteins. Overexpression of this gene may play a role in multiple types of cancer. Alternatively spliced transcript variants encoding multiple isoforms have been observed for this gene.

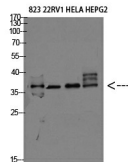
Recommended Dilution

WB: 1: 500 - 1: 2000

ELISA: 1: 10000 - 1: 20000

Not yet tested in other applications.

Images



Western blot analysis of 823 22RV1 HELA HEPG2 Cell Lysate, antibody was diluted at 1:2000. Secondary antibody was diluted at 1:20000

Storage

-20°C for 1 year