

CNEP1 Polyclonal Antibody

Description

Product type	Primary Antibody
Code	BT-AP15041
Host	Rabbit
Isotype	IgG
Size	20ul, 50ul, 100ul
Immunogen	Synthesized peptide derived from human protein . at AA range: 100-180
Mol wt	N/A
Species reactivity	Human, Rat, Mouse
Clonality	Polyclonal
Recommended application	WB, ELISA
Concentration	1 mg/ml
Full name	CTD nuclear envelope phosphatase 1
Synonyms	CTD nuclear envelope phosphatase 1 ;EC 3.1.3.16;Serine/threonine-protein phosphatase dullard

This product is for research use only, not for use in human, therapeutic or diagnostic procedure.

Background

Catalytic activity:A phosphoprotein + H₂O = a protein + phosphate.,Serine/threonine phosphatase which may be required for proper nuclear membrane morphology. Involved in LPIN1 dephosphorylation. May antagonize BMP signaling.,Belongs to the dullard family.,Contains 1 FCP1 homology domain.,

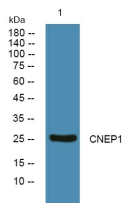
Recommended Dilution

WB: 1: 500 - 1: 2000

ELISA: 1: 5000 - 1: 20000

Not yet tested in other applications.

Images



Western blot analysis of lysates from KB cells, primary antibody was diluted at 1:1000, 4°C overnight

Storage

-20°C for 1 year