

TPH1(Phospho Ser260) Polyclonal Antibody

Description

Product type	Primary Antibody
Code	BT-AP15090
Host	Rabbit
Isotype	IgG
Size	20ul, 50ul, 100ul
Immunogen	The antiserum was produced against synthesized peptide derived from human Tryptophan Hydroxylase around the phosphorylation site of Ser260. AA range:231-280
Mol wt	50985
Species reactivity	Human, Mouse, Rat
Clonality	Polyclonal
Recommended application	WB, IHC-p, IF, ELISA
Concentration	1 mg/ml
Full name	Tryptophan 5-hydroxylase 1
Synonyms	Tryptophan 5-hydroxylase 1; TPH1; TPH; TPRH; TRPH; Tryptophan 5-hydroxylase 1; Tryptophan 5-monoxygenase 1

This product is for research use only, not for use in human, therapeutic or diagnostic procedure.

Background

This gene encodes a member of the aromatic amino acid hydroxylase family. The encoded protein catalyzes the first and rate limiting step in the biosynthesis of serotonin, an important hormone and neurotransmitter. Mutations in this gene have been associated with an elevated risk for a variety of diseases and disorders, including schizophrenia, somatic anxiety, anger-related traits, bipolar disorder, suicidal behavior, addictions, and others.

Recommended Dilution

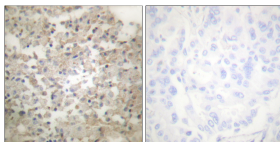
WB: 1: 500 - 1: 2000

IHC-p: 1: 100 - 1: 300

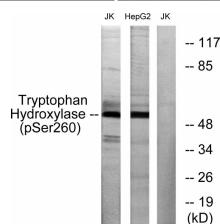
ELISA: 1: 10000

Not yet tested in other applications.

Images



Immunohistochemistry analysis of paraffin-embedded human lung carcinoma, using Tryptophan Hydroxylase (Phospho-Ser260) Antibody. The picture on the right is blocked with the phospho peptide.



Western blot analysis of lysates from Jurkat cells and HepG2 cells, using Tryptophan Hydroxylase (Phospho-Ser260) Antibody. The lane on the right is blocked with the phospho peptide.

Storage

-20°C for 1 year

501 Changsheng S Rd, Nanhu Dist, Jiaxing, Zhejiang, China

Tel: 86 21 31007137 | E-mail: save@bt-laboratory.com | www.bt-laboratory.com