

## TPH1(Phospho Ser58) Polyclonal Antibody

### Description

<b>Product type</b>	Primary Antibody
<b>Code</b>	BT-AP15091
<b>Host</b>	Rabbit
<b>Isotype</b>	IgG
<b>Size</b>	20ul, 50ul, 100ul
<b>Immunogen</b>	The antiserum was produced against synthesized peptide derived from human Tryptophan Hydroxylase around the phosphorylation site of Ser58. AA range:26-75
<b>Mol wt</b>	50985
<b>Species reactivity</b>	Human, Mouse, Rat
<b>Clonality</b>	Polyclonal
<b>Recommended application</b>	WB, IHC-p, IF, ELISA
<b>Concentration</b>	1 mg/ml
<b>Full name</b>	Tryptophan 5-hydroxylase 1
<b>Synonyms</b>	Tryptophan 5-hydroxylase 1; TPH1; TPH; TPRH; TRPH; Tryptophan 5-hydroxylase 1; Tryptophan 5-monoxygenase 1

**This product is for research use only, not for use in human, therapeutic or diagnostic procedure.**

### Background

This gene encodes a member of the aromatic amino acid hydroxylase family. The encoded protein catalyzes the first and rate limiting step in the biosynthesis of serotonin, an important hormone and neurotransmitter. Mutations in this gene have been associated with an elevated risk for a variety of diseases and disorders, including schizophrenia, somatic anxiety, anger-related traits, bipolar disorder, suicidal behavior, addictions, and others.

### Recommended Dilution

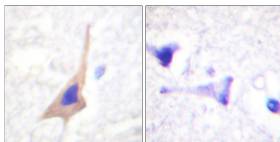
WB: 1: 500 - 1: 2000

IHC-p: 1: 100 - 1: 300

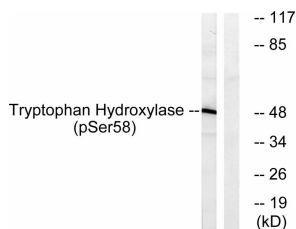
ELISA: 1: 10000

Not yet tested in other applications.

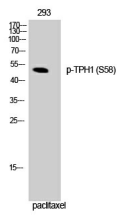
### Images



Immunohistochemistry analysis of paraffin-embedded human brain, using Tryptophan Hydroxylase (Phospho-Ser58) Antibody. The picture on the right is blocked with the phospho peptide.



Western Blot analysis of 293 cells using Phospho-TPH1 (S58) Polyclonal Antibody



Western blot analysis of lysates from 293 cells treated with paclitaxel 1uM 24h, using Tryptophan Hydroxylase (Phospho-Ser58) Antibody. The lane on the right is blocked with the phospho peptide.

### Storage

-20°C for 1 year

501 Changsheng S Rd, Nanhu Dist, Jiaxing, Zhejiang, China

Tel: 86 21 31007137 | E-mail: [save@bt-laboratory.com](mailto:save@bt-laboratory.com) | [www.bt-laboratory.com](http://www.bt-laboratory.com)