

CPXCR Polyclonal Antibody

Description

Product type	Primary Antibody
Code	BT-AP15092
Host	Rabbit
Isotype	IgG
Size	20ul, 50ul, 100ul
Immunogen	Synthesized peptide derived from human protein . at AA range: 30-110
Mol wt	N/A
Species reactivity	Human, Rat, Mouse
Clonality	Polyclonal
Recommended application	WB, ELISA
Concentration	1 mg/ml
Full name	CPX chromosomal region candidate gene 1 protein
Synonyms	CPX chromosomal region candidate gene 1 protein ;Cancer/testis antigen 77;CT77

This product is for research use only, not for use in human, therapeutic or diagnostic procedure.

Background

This gene is one of several genes identified in a region of the X chromosome associated with an X-linked cleft palate (CPX) disorder. The encoded protein contains a motif similar to a motif found in zinc-finger proteins. Mutation analysis of this gene has not revealed any mutation which causes the CPX disorder. Multiple alternatively spliced variants, encoding the same protein, have been identified.

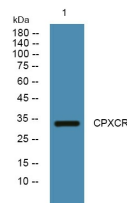
Recommended Dilution

WB: 1: 500 - 1: 2000

ELISA: 1: 5000 - 1: 20000

Not yet tested in other applications.

Images



Western blot analysis of lysates from HCT116 cells, primary antibody was diluted at 1:1000, 4°C overnight

Storage

-20°C for 1 year