

## TPH2(Phospho Ser19) Polyclonal Antibody

### Description

<b>Product type</b>	Primary Antibody
<b>Code</b>	BT-AP15094
<b>Host</b>	Rabbit
<b>Isotype</b>	IgG
<b>Size</b>	20ul, 50ul, 100ul
<b>Immunogen</b>	Synthesized phospho-peptide around the phosphorylation site of human TPH2 (phospho Ser19)
<b>Mol wt</b>	56057
<b>Species reactivity</b>	Human, Mouse, Rat
<b>Clonality</b>	Polyclonal
<b>Recommended application</b>	WB, ELISA
<b>Concentration</b>	1 mg/ml
<b>Full name</b>	Tryptophan 5-hydroxylase 2
<b>Synonyms</b>	Tryptophan 5-hydroxylase 2; TPH2; NTPH; Tryptophan 5-hydroxylase 2; Neuronal tryptophan hydroxylase; Tryptophan 5-monoxygenase 2

**This product is for research use only, not for use in human, therapeutic or diagnostic procedure.**

### Background

This gene encodes a member of the pterin-dependent aromatic acid hydroxylase family. The encoded protein catalyzes the first and rate limiting step in the biosynthesis of serotonin, an important hormone and neurotransmitter. Mutations in this gene may be associated with psychiatric diseases such as bipolar affective disorder and major depression.

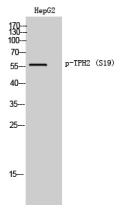
### Recommended Dilution

WB: 1: 500 - 1: 2000

ELISA: 1: 40000

Not yet tested in other applications.

### Images



Western Blot analysis of HepG2 cells using Phospho-TPH2 (S19) Polyclonal Antibody

### Storage

-20°C for 1 year