

CR3L4 Polyclonal Antibody

Description

Product type	Primary Antibody
Code	BT-AP15096
Host	Rabbit
Isotype	IgG
Size	20ul, 50ul, 100ul
Immunogen	Synthesized peptide derived from human protein . at AA range: 200-280
Mol wt	N/A
Species reactivity	Human, Mouse, Rat
Clonality	Polyclonal
Recommended application	WB, ELISA
Concentration	1 mg/ml
Full name	Cyclic AMP-responsive element-binding protein 3-like protein 4
Synonyms	Cyclic AMP-responsive element-binding protein 3-like protein 4 ;cAMP-responsive element-binding protein 3-like protein 4;Androgen-induced basic leucine zipper protein;AIBZIP;Attaching to CRE-lik

This product is for research use only, not for use in human, therapeutic or diagnostic procedure.

Background

This gene encodes a CREB (cAMP responsive element binding) protein with a transmembrane domain which localizes it to the ER membrane. The encoded protein is a transcriptional activator which contains a dimerization domain, and this protein may function in a number of processing pathways including protein processing. Multiple transcript variants encoding different isoforms have been found for this gene.

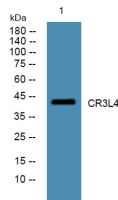
Recommended Dilution

WB: 1: 500 - 1: 2000

ELISA: 1: 5000 - 1: 20000

Not yet tested in other applications.

Images



Western blot analysis of lysates from A431 cells, primary antibody was diluted at 1:1000, 4°C overnight

Storage

-20°C for 1 year