

TPPC4 Polyclonal Antibody

Description

Product type	Primary Antibody
Code	BT-AP15098
Host	Rabbit
Isotype	IgG
Size	20ul, 50ul, 100ul
Immunogen	Synthesized peptide derived from part region of human protein
Mol wt	N/A
Species reactivity	Human, Rat, Mouse
Clonality	Polyclonal
Recommended application	WB, ELISA
Concentration	1 mg/ml
Full name	Trafficking protein particle complex subunit 4
Synonyms	Trafficking protein particle complex subunit 4 ;Hematopoietic stem/progenitor cell protein 172;Synbindin;TRS23 homolog

This product is for research use only, not for use in human, therapeutic or diagnostic procedure.

Background

May play a role in vesicular transport from endoplasmic reticulum to Golgi.,Belongs to the TRAPP small subunits family. TRAPPC4 subfamily.,subunit:Part of the multisubunit TRAPP (transport protein particle) complex. Interacts with SDC2.,

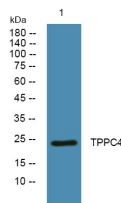
Recommended Dilution

WB: 1: 500 - 1: 2000

ELISA: 1: 5000 - 1: 20000

Not yet tested in other applications.

Images



Western blot analysis of lysates from U2OS cells, primary antibody was diluted at 1:1000, 4°C overnight

Storage

-20°C for 1 year