

CRTAM Polyclonal Antibody

Description

Product type	Primary Antibody
Code	BT-AP15109
Host	Rabbit
Isotype	IgG
Size	20ul, 50ul, 100ul
Immunogen	Synthesized peptide derived from human protein . at AA range: 260-340
Mol wt	N/A
Species reactivity	Human, Mouse
Clonality	Polyclonal
Recommended application	WB, ELISA
Concentration	1 mg/ml
Full name	Cytotoxic and regulatory T-cell molecule
Synonyms	Cytotoxic and regulatory T-cell molecule ;Class-I MHC-restricted T-cell-associated molecule;CD antigen CD355

This product is for research use only, not for use in human, therapeutic or diagnostic procedure.

Background

The CRTAM gene is upregulated in CD4 (see MIM 186940)-positive and CD8 (see CD8A; MIM 186910)-positive T cells and encodes a type I transmembrane protein with V and C1-like Ig domains (Yeh et al., 2008)

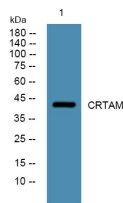
Recommended Dilution

WB: 1: 500 - 1: 2000

ELISA: 1: 5000 - 1: 20000

Not yet tested in other applications.

Images



Western blot analysis of lysates from PC12 cells, primary antibody was diluted at 1:1000, 4°C overnight

Storage

-20°C for 1 year