

## Csk(Phospho Ser364) Polyclonal Antibody

### Description

<b>Product type</b>	Primary Antibody
<b>Code</b>	BT-AP15112
<b>Host</b>	Rabbit
<b>Isotype</b>	IgG
<b>Size</b>	20ul, 50ul, 100ul
<b>Immunogen</b>	The antiserum was produced against synthesized peptide derived from human Csk around the phosphorylation site of Ser364. AA range:330-379
<b>Mol wt</b>	50704
<b>Species reactivity</b>	Human, Mouse, Rat
<b>Clonality</b>	Polyclonal
<b>Recommended application</b>	WB, IHC-p, IF, ELISA
<b>Concentration</b>	1 mg/ml
<b>Full name</b>	Tyrosine-protein kinase CSK
<b>Synonyms</b>	Tyrosine-protein kinase CSK; CSK; Tyrosine-protein kinase CSK; C-Src kinase; Protein-tyrosine kinase CYL

This product is for research use only, not for use in human, therapeutic or diagnostic procedure.

### Background

N/A

### Recommended Dilution

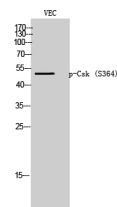
WB: 1: 500 - 1: 2000

IHC-p: 1: 100 - 1: 300

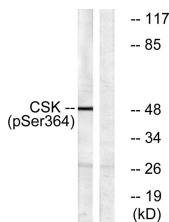
ELISA: 1: 10000

Not yet tested in other applications.

### Images



Western Blot analysis of VEC cells using Phospho-Csk (S364) Polyclonal Antibody



Western blot analysis of lysates from HeLa cells treated with PMA 125ng/ml 30', using Csk (Phospho-Ser364) Antibody. The lane on the right is blocked with the phospho peptide.

## Storage

-20°C for 1 year

501 Changsheng S Rd, Nanhu Dist, Jiaxing, Zhejiang, China

Tel: 86 21 31007137 | E-mail: [save@bt-laboratory.com](mailto:save@bt-laboratory.com) | [www.bt-laboratory.com](http://www.bt-laboratory.com)