

## CSK22 Polyclonal Antibody

### Description

|                                |   |
|--------------------------------|---|
| <b>Product type</b>            | Primary Antibody  |
| <b>Code</b>                    | BT-AP15113  |
| <b>Host</b>                    | Rabbit  |
| <b>Isotype</b>                 | IgG   |
| <b>Size</b>                    | 20ul, 50ul, 100ul   |
| <b>Immunogen</b>               | Synthesized peptide derived from part region of human protein |
| <b>Mol wt</b>                  | N/A   |
| <b>Species reactivity</b>      | Human, Mouse  |
| <b>Clonality</b>               | Polyclonal  |
| <b>Recommended application</b> | WB, ELISA   |
| <b>Concentration</b>           | 1 mg/ml   |
| <b>Full name</b>               | Casein kinase II subunit alpha'                               |
| <b>Synonyms</b>                | Casein kinase II subunit alpha' ;CK II alpha';EC 2.7.11.1     |

**This product is for research use only, not for use in human, therapeutic or diagnostic procedure.**

### Background

Catalytic activity:ATP + a protein = ADP + a phosphoprotein.,Casein kinases are operationally defined by their preferential utilization of acidic proteins such as caseins as substrates. The alpha and alpha' chains contain the catalytic site. Participates in Wnt signaling. CK2 phosphorylates 'Ser-392' of p53/TP53 following UV irradiation.,Belongs to the protein kinase superfamily. Ser/Thr protein kinase family. CK2 subfamily.,Contains 1 protein kinase domain.,subunit:Tetramer composed of an alpha chain, an alpha' and two beta chains. Also component of a CK2-SPT16-SSRP1 complex composed of SSRP1, SUPT16H, CSNK2A1, CSNK2A2 and CSNK2B, the complex associating following UV irradiation.,

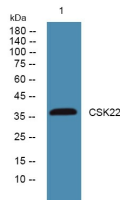
### Recommended Dilution

WB: 1: 500 - 1: 2000

ELISA: 1: 5000 - 1: 20000

Not yet tested in other applications.

### Images



Western blot analysis of lysates from K562 cells, primary antibody was diluted at 1:1000, 4°C overnight

### Storage

-20°C for 1 year