

CXCR4 Polyclonal Antibody

Description

Product type	Primary Antibody
Code	BT-AP15126
Host	Rabbit
Isotype	IgG
Size	20ul, 50ul, 100ul
Immunogen	Synthetic Peptide of CXCR4
Mol wt	N/A
Species reactivity	Human, Rat, Mouse
Clonality	Polyclonal
Recommended application	WB, IHC-p, IF
Concentration	1 mg/ml
Full name	C-X-C chemokine receptor type 4
Synonyms	C-X-C chemokine receptor type 4 ;CXC-R4;CXCR-4;FB22;Fusin;HM89;LCR1;Leukocyte-derived seven transmembrane domain receptor;LESTR;NPYRL;Stromal cell-derived factor 1 receptor;SDF-1 r; CXCR4; C-X-C chemokine receptor type 4; CXC-R4; CXCR-4; FB22; Fusin; HM89; LCR1; Leukocyte-derived seven transmembrane domain receptor; LESTR; NPYRL; Stromal cell-derived factor 1 receptor; SDF-1 receptor; CD antigen CD184

This product is for research use only, not for use in human, therapeutic or diagnostic procedure.

Background

This gene encodes a CXC chemokine receptor specific for stromal cell-derived factor-1. The protein has 7 transmembrane regions and is located on the cell surface. It acts with the CD4 protein to support HIV entry into cells and is also highly expressed in breast cancer cells. Mutations in this gene have been associated with WHIM (warts, hypogammaglobulinemia, infections, and myelokathexis) syndrome. Alternate transcriptional splice variants, encoding different isoforms, have been characterized.

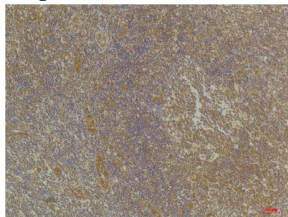
Recommended Dilution

WB: 1: 1000 - 1: 2000

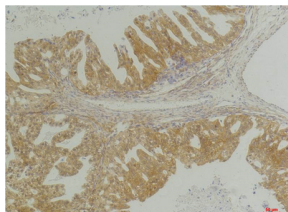
IHC: 1: 100 - 1: 200

Not yet tested in other applications.

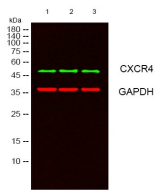
Images



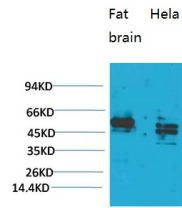
Immunohistochemical analysis of paraffin-embedded Human Breast Carcinoma using CXCR4 Rabbit pAb diluted at 1:200.



Immunohistochemical analysis of paraffin-embedded Human Tonsil Tissue using CXCR4 Rabbit pAb diluted at 1:200.



Western blot analysis of 1) Rat Brain Tissue, 2)Hela, with CXCR4 Rabbit pAb diluted at 1:2,000.



Western blot analysis of lysates from 1) Rat Brain Tissue, 2)Hela, 3) HEK293 cells, (Green) primary antibody was diluted at 1:1000, 4°C overnight, secondary antibody was diluted at 1:10000, 37°C 1hour. (Red) GAPDH Monoclonal Antibody(2B8) was diluted at 1:5000 as loading control, 4°C overnight,secondary antibody was diluted at 1:10000, 37°C 1hour.

Storage

-20°C for 1 year

501 Changsheng S Rd, Nanhu Dist, Jiaxing, Zhejiang, China

Tel: 86 21 31007137 | E-mail: save@bt-laboratory.com | www.bt-laboratory.com