

CY24A Polyclonal Antibody

Description

Product type	Primary Antibody
Code	BT-AP15128
Host	Rabbit
Isotype	IgG
Size	20ul, 50ul, 100ul
Immunogen	Synthesized peptide derived from human protein . at AA range: 80-160
Mol wt	N/A
Species reactivity	Human, Rat, Mouse
Clonality	Polyclonal
Recommended application	WB, ELISA
Concentration	1 mg/ml
Full name	Cytochrome b-245 light chain
Synonyms	Cytochrome b-245 light chain ;Cytochrome b;558 alpha chain;Cytochrome b558 subunit alpha;Neutrophil cytochrome b 22 kDa polypeptide;Superoxide-generating NADPH oxidase light chain subunit;p22

This product is for research use only, not for use in human, therapeutic or diagnostic procedure.

Background

Cytochrome b is comprised of a light chain (alpha) and a heavy chain (beta). This gene encodes the light, alpha subunit which has been proposed as a primary component of the microbicidal oxidase system of phagocytes. Mutations in this gene are associated with autosomal recessive chronic granulomatous disease (CGD), that is characterized by the failure of activated phagocytes to generate superoxide, which is important for the microbicidal activity of these cells.

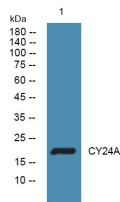
Recommended Dilution

WB: 1: 500 - 1: 2000

ELISA: 1: 5000 - 1: 20000

Not yet tested in other applications.

Images



Western blot analysis of lysates from A431 cells, primary antibody was diluted at 1:1000, 4°C overnight

Storage

-20°C for 1 year