

CYB5B Polyclonal Antibody

Description

| | |
|--------------------------------|--------------------------------------------------------------------------|
| Product type | Primary Antibody |
| Code | BT-AP15129 |
| Host | Rabbit |
| Isotype | IgG |
| Size | 20ul, 50ul, 100ul |
| Immunogen | Synthesized peptide derived from human protein . at AA range: 50-130 |
| Mol wt | N/A |
| Species reactivity | Human, Rat, Mouse |
| Clonality | Polyclonal |
| Recommended application | WB, ELISA |
| Concentration | 1 mg/ml |
| Full name | Cytochrome b5 type B |
| Synonyms | Cytochrome b5 type B ;Cytochrome b5 outer mitochondrial membrane isoform |

This product is for research use only, not for use in human, therapeutic or diagnostic procedure.

Background

Cytochrome b5 is a membrane bound hemoprotein which function as an electron carrier for several membrane bound oxygenases.,Belongs to the cytochrome b5 family.,Contains 1 cytochrome b5 heme-binding domain.,subunit:Component of a complex composed of cytochrome b5, NADH-cytochrome b5 reductase (CYB5R3) and MOSC2.,

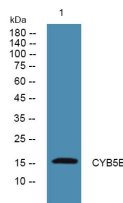
Recommended Dilution

WB: 1: 500 - 1: 2000

ELISA: 1: 5000 - 1: 20000

Not yet tested in other applications.

Images



Western blot analysis of lysates from PC12 cells, primary antibody was diluted at 1:1000, 4°C overnight

Storage

-20°C for 1 year