

CYLC2 Polyclonal Antibody

Description

Product type	Primary Antibody
Code	BT-AP15158
Host	Rabbit
Isotype	IgG
Size	20ul, 50ul, 100ul
Immunogen	Synthesized peptide derived from human protein . at AA range: 280-360
Mol wt	N/A
Species reactivity	Human, Rat, Mouse
Clonality	Polyclonal
Recommended application	WB, ELISA
Concentration	1 mg/ml
Full name	Cylicin-2
Synonyms	Cylicin-2 ;Cylicin II;Multiple-band polypeptide II

This product is for research use only, not for use in human, therapeutic or diagnostic procedure.

Background

Cylicin II (CYLC2) is specifically expressed in testis and is part of the cytoskeletal calyx of mammalian sperm heads. Cylicin II may play a role in the morphogenesis of the sperm head.

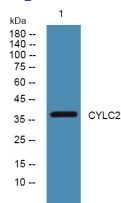
Recommended Dilution

WB: 1: 500 - 1: 2000

ELISA: 1: 5000 - 1: 20000

Not yet tested in other applications.

Images



Western blot analysis of lysates from KB cells, primary antibody was diluted at 1:1000, 4°C overnight

Storage

-20°C for 1 year