

Trk B(Phospho Tyr706) Polyclonal Antibody

Description

Product type	Primary Antibody
Code	BT-AP15160
Host	Rabbit
Isotype	IgG
Size	20ul, 50ul, 100ul
Immunogen	The antiserum was produced against synthesized peptide derived from human Trk B around the phosphorylation site of Tyr705. AA range:671-720
Mol wt	91999
Species reactivity	Human, Mouse, Rat
Clonality	Polyclonal
Recommended application	WB, IHC-p, IF, ICC, ELISA
Concentration	1 mg/ml
Full name	BDNF/NT-3 growth factors receptor
Synonyms	BDNF/NT-3 growth factors receptor; NTRK2; TRKB; BDNF/NT-3 growth factors receptor; GP145-TrkB; Trk-B; Neurotrophic tyrosine kinase receptor type 2; TrkB tyrosine kinase; Tropomyosin-related kinase B

This product is for research use only, not for use in human, therapeutic or diagnostic procedure.

Background

This gene encodes a member of the neurotrophic tyrosine receptor kinase (NTRK) family. This kinase is a membrane-bound receptor that, upon neurotrophin binding, phosphorylates itself and members of the MAPK pathway. Signalling through this kinase leads to cell differentiation. Mutations in this gene have been associated with obesity and mood disorders. Alternative splicing results in multiple transcript variants.

Recommended Dilution

WB: 1: 500 - 1: 2000

IHC-p: 1: 100 - 1: 300

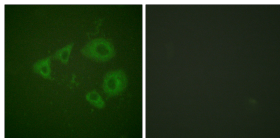
IF: 1: 200 - 1: 1000

ICC: 1: 200 - 1: 1000

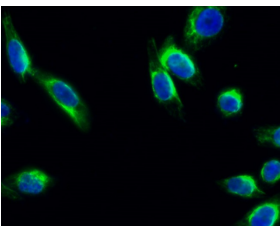
ELISA: 1: 20000

Not yet tested in other applications.

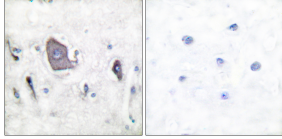
Images



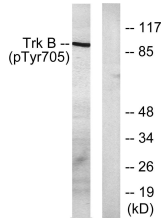
Immunofluorescence analysis of HeLa cell. 1, Trk B (phospho Tyr706) Polyclonal Antibody (Green) was diluted at 1:200 (4°C overnight). 2 DAPI (blue) 10min.



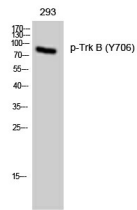
Immunofluorescence analysis of HUVEC cells, using Trk B (Phospho-Tyr705) Antibody. The picture on the right is blocked with the phospho peptide.



Immunohistochemistry analysis of paraffin-embedded human brain, using Trk B (Phospho-Tyr705) Antibody. The picture on the right is blocked with the phospho peptide.



Western Blot analysis of 293 cells using Phospho-Trk B (Y706) Polyclonal Antibody diluted at 1:1000



Western blot analysis of lysates from mouse kidney, using Trk B (Phospho-Tyr705) Antibody. The lane on the right is blocked with the phospho peptide.

Storage

-20°C for 1 year

501 Changsheng S Rd, Nanhu Dist, Jiaxing, Zhejiang, China

Tel: 86 21 31007137 | E-mail: save@bt-laboratory.com | www.bt-laboratory.com