

CYR61 Polyclonal Antibody

Description

Product type	Primary Antibody
Code	BT-AP15162
Host	Rabbit
Isotype	IgG
Size	20ul, 50ul, 100ul
Immunogen	Synthesized peptide derived from part region of human protein
Mol wt	N/A
Species reactivity	Human, Rat, Mouse
Clonality	Polyclonal
Recommended application	WB, ELISA
Concentration	1 mg/ml
Full name	Protein CYR61
Synonyms	Protein CYR61 ;CCN family member 1;Cysteine-rich angiogenic inducer 61;Insulin-like growth factor-binding protein 10;IBP-10;IGF-binding protein 10;IGFBP-10;Protein GIG1

This product is for research use only, not for use in human, therapeutic or diagnostic procedure.

Background

The secreted protein encoded by this gene is growth factor-inducible and promotes the adhesion of endothelial cells. The encoded protein interacts with several integrins and with heparan sulfate proteoglycan. This protein also plays a role in cell proliferation, differentiation, angiogenesis, apoptosis, and extracellular matrix formation.

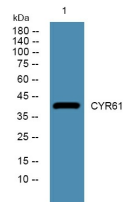
Recommended Dilution

WB: 1: 500 - 1: 2000

ELISA: 1: 5000 - 1: 20000

Not yet tested in other applications.

Images



Western blot analysis of lysates from SH-SY5Y cells, primary antibody was diluted at 1:1000, 4°C overnight

Storage

-20°C for 1 year