

Troponin I-C(Phospho Thr142) Polyclonal Antibody

Description

Product type	Primary Antibody
Code	BT-AP15169
Host	Rabbit
Isotype	IgG
Size	20ul, 50ul, 100ul
Immunogen	The antiserum was produced against synthesized peptide derived from human TNNI3 around the phosphorylation site of Thr142. AA range:111-160
Mol wt	24008
Species reactivity	Human, Mouse, Rat
Clonality	Polyclonal
Recommended application	WB, IHC-p, IF, ELISA
Concentration	1 mg/ml
Full name	Troponin I cardiac muscle
Synonyms	Troponin I cardiac muscle; TNNI3; TNNC1; Troponin I; cardiac muscle; Cardiac troponin I

This product is for research use only, not for use in human, therapeutic or diagnostic procedure.

Background

Troponin I (TnI), along with troponin T (TnT) and troponin C (TnC), is one of 3 subunits that form the troponin complex of the thin filaments of striated muscle. TnI is the inhibitory subunit; blocking actin-myosin interactions and thereby mediating striated muscle relaxation. The TnI subfamily contains three genes: TnI-skeletal-fast-twitch, TnI-skeletal-slow-twitch, and TnI-cardiac. This gene encodes the TnI-cardiac protein and is exclusively expressed in cardiac muscle tissues. Mutations in this gene cause familial hypertrophic cardiomyopathy type 7 (CMH7) and familial restrictive cardiomyopathy (RCM).

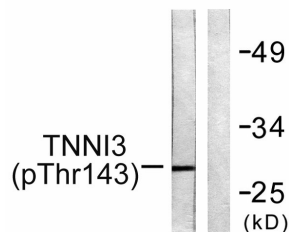
Recommended Dilution

WB: 1: 500 - 1: 2000

ELISA: 1: 20000

Not yet tested in other applications.

Images



Western blot analysis of lysates from mouse heart, using TNNI3 (Phospho-Thr142) Antibody. The lane on the right is blocked with the phospho peptide.

Storage

-20°C for 1 year