

Cytokeratin 4 Polyclonal Antibody

Description

Product type	Primary Antibody
Code	BT-AP15171
Host	Rabbit
Isotype	IgG
Size	20ul, 50ul, 100ul
Immunogen	Synthetic peptide from human protein at AA range: 200-260
Mol wt	N/A
Species reactivity	Human, Mouse, Rat
Clonality	Polyclonal
Recommended application	WB, ELISA
Concentration	1 mg/ml
Full name	Keratin, type II cytoskeletal 4
Synonyms	Keratin, type II cytoskeletal 4 ;Cytokeratin-4;CK-4;Keratin-4;K4;Type-II keratin Kb4; Keratin, type II cytoskeletal 4; Cytokeratin-4; CK-4; Keratin-4; K4; Type-II keratin Kb4

This product is for research use only, not for use in human, therapeutic or diagnostic procedure.

Background

The protein encoded by this gene is a member of the keratin gene family. The type II cytokeratins consist of basic or neutral proteins which are arranged in pairs of heterotypic keratin chains coexpressed during differentiation of simple and stratified epithelial tissues. This type II cytokeratin is specifically expressed in differentiated layers of the mucosal and esophageal epithelia with family member KRT13. Mutations in these genes have been associated with White Sponge Nevus, characterized by oral, esophageal, and anal leukoplakia. The type II cytokeratins are clustered in a region of chromosome 12q12-q13.

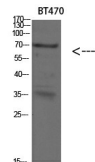
Recommended Dilution

WB: 1: 500 - 1: 2000

ELISA: 1: 10000 - 1: 20000

Not yet tested in other applications.

Images



Western blot analysis of SKOV3 293T lysate, antibody was diluted at 500. Secondary antibody was diluted at 1:20000

Storage

-20°C for 1 year