

DAAM1 Polyclonal Antibody

Description

Product type	Primary Antibody
Code	BT-AP15173
Host	Rabbit
Isotype	IgG
Size	20ul, 50ul, 100ul
Immunogen	Synthetic peptide from human protein at AA range: 400-500
Mol wt	N/A
Species reactivity	Human, Mouse
Clonality	Polyclonal
Recommended application	WB, ELISA
Concentration	1 mg/ml
Full name	Disheveled-associated activator of morphogenesis 1
Synonyms	Disheveled-associated activator of morphogenesis 1; Disheveled-associated activator of morphogenesis 1

This product is for research use only, not for use in human, therapeutic or diagnostic procedure.

Background

Cell motility, adhesion, cytokinesis, and other functions of the cell cortex are mediated by reorganization of the actin cytoskeleton and several formin homology (FH) proteins have been associated with these processes. The protein encoded by this gene contains two FH domains and belongs to a novel FH protein subfamily implicated in cell polarity. A key regulator of cytoskeletal architecture, the small GTPase Rho, is activated during development by Wnt/Fz signaling to control cell polarity and movement. The protein encoded by this gene is thought to function as a scaffolding protein for the Wnt-induced assembly of a disheveled (Dvl)-Rho complex. This protein also promotes the nucleation and elongation of new actin filaments and regulates cell growth through the stabilization of microtubules. Alternative splicing results in multiple transcript variants encoding distinct

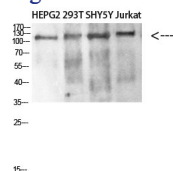
Recommended Dilution

WB: 1: 500 - 1: 2000

ELISA: 1: 10000 - 1: 20000

Not yet tested in other applications.

Images



Western blot analysis of SW480 MCF7 lysate, antibody was diluted at 500. Secondary antibody was diluted at 1:20000

Storage

-20°C for 1 year