

Dab1(Phospho Tyr232) Polyclonal Antibody

Description

Product type	Primary Antibody
Code	BT-AP15174
Host	Rabbit
Isotype	IgG
Size	20ul, 50ul, 100ul
Immunogen	The antiserum was produced against synthesized peptide derived from human Dab1 around the phosphorylation site of Tyr232. AA range:199-248
Mol wt	59979
Species reactivity	Human, Mouse, Rat
Clonality	Polyclonal
Recommended application	WB, IF, ICC, ELISA
Concentration	1 mg/ml
Full name	Disabled homolog 1
Synonyms	Disabled homolog 1; DAB1; Disabled homolog 1

This product is for research use only, not for use in human, therapeutic or diagnostic procedure.

Background

The laminar organization of multiple neuronal types in the cerebral cortex is required for normal cognitive function. In mice, the disabled-1 gene plays a central role in brain development, directing the migration of cortical neurons past previously formed neurons to reach their proper layer. This gene is similar to disabled-1, and the protein encoded by this gene is thought to be a signal transducer that interacts with protein kinase pathways to regulate neuronal positioning in the developing brain. Alternatively spliced transcript variants of this gene have been reported, but their full length nature has not been determined.

Recommended Dilution

WB: 1: 500 - 1: 2000

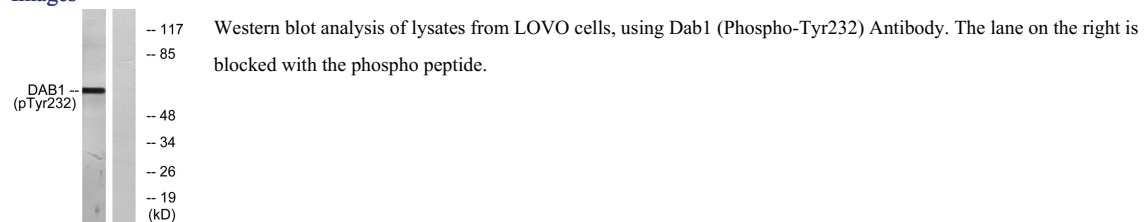
IF: 1: 200 - 1: 1000

ICC: 1: 200 - 1: 1000

ELISA: 1: 20000

Not yet tested in other applications.

Images



Storage

-20°C for 1 year